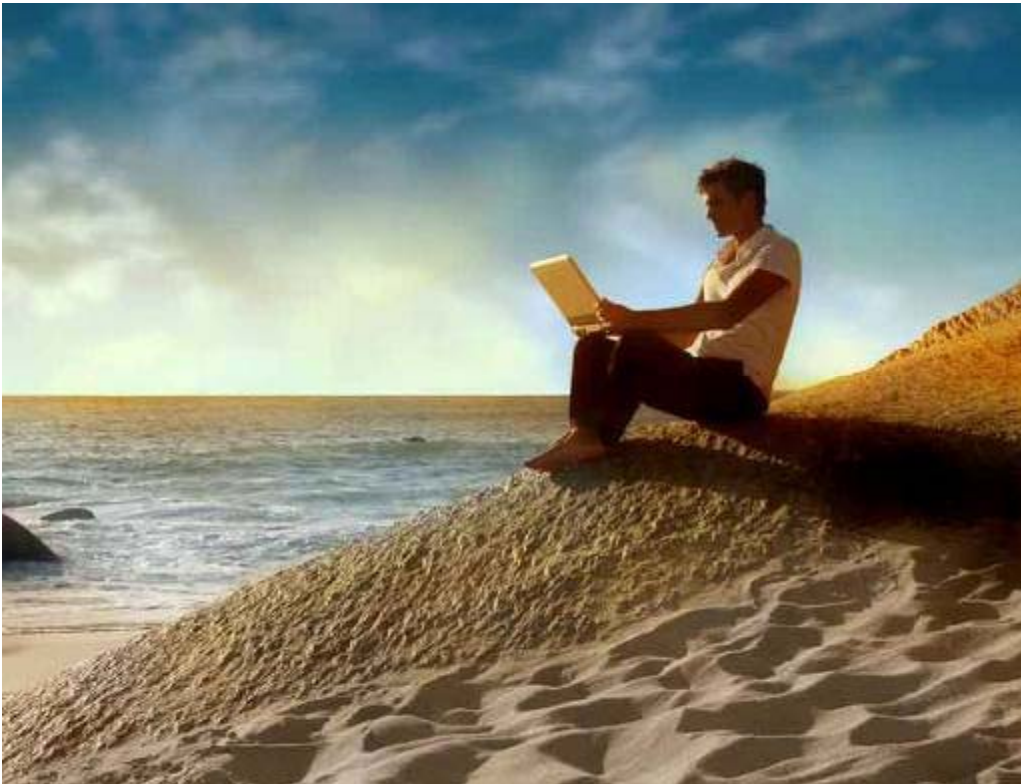


Q2 Fiscal 2010 Financial Results October 9, 2009

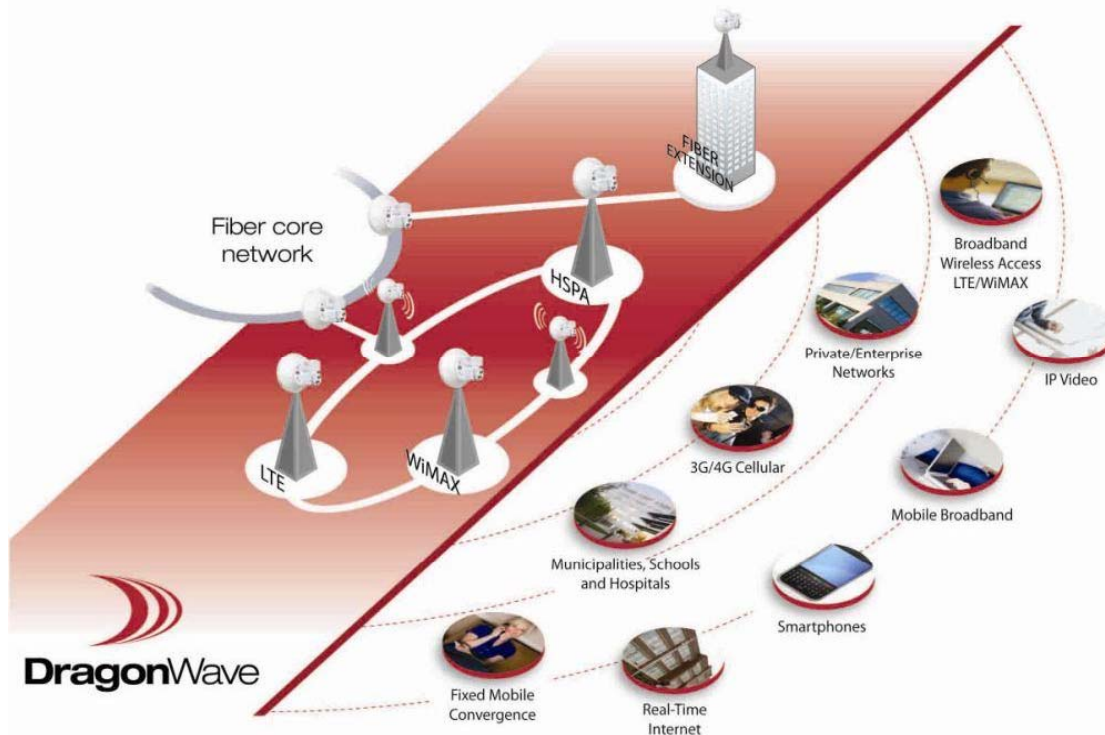
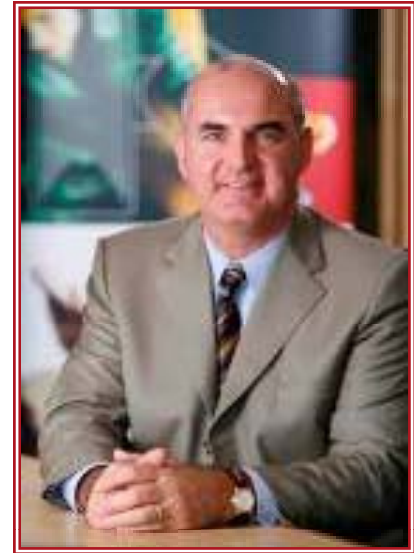


DragonWave

BACKHAUL EVOLVED

Financial Highlights

Russell Frederick – VP Finance & CFO



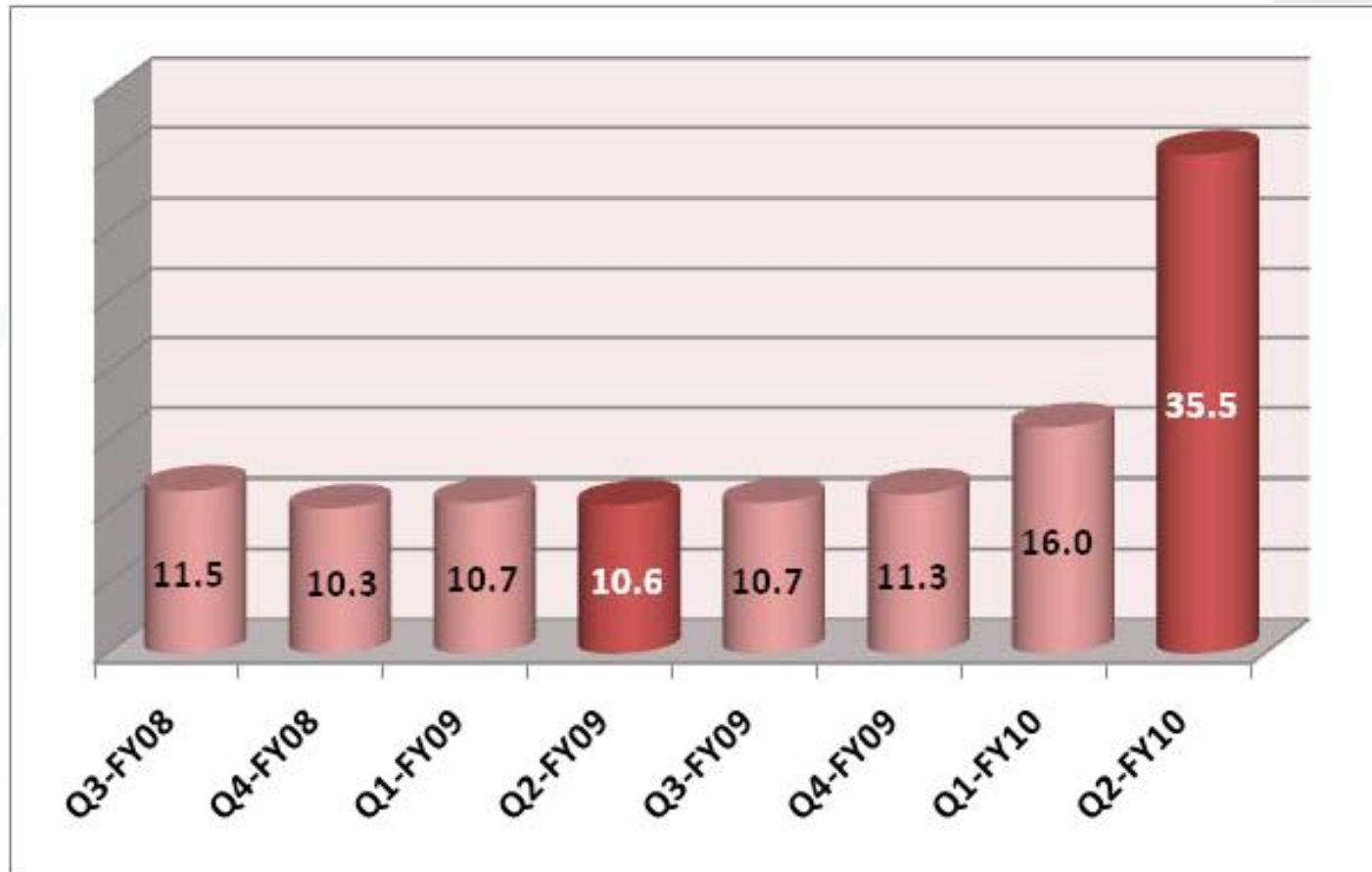
Legal Disclaimer

This summary has been derived from, and should be read in conjunction with, DragonWave's financial statements, and management's discussion and analysis for the second quarter of DragonWave's 2010 fiscal year, which are available on www.sedar.com.

Historical results do not necessarily indicate results for any future period. DragonWave's financial statements are prepared in accordance with Canadian generally accepted accounting principles. Unless otherwise indicated, all dollars amounts herein are denominated in Canadian dollars.

Quarterly Revenue Comparison

Revenue in millions CAD\$



Note: See "Selected Consolidated Quarterly Financial Information" of the Management Discussion & Analysis for the three and six months ended August 31, 2009

Revenue by Geography

CAD \$ Thousands

Geographical region	Three months ended			
	Aug 31, 2009		Aug 31, 2008	
	\$	%	\$	%
North America	31,869	90%	7,644	72%
Europe, Middle East and Africa	2,965	8%	2,751	26%
Rest of World	675	2%	177	2%
	35,509		10,572	

Geographical region	Six months ended			
	Aug 31, 2009		Aug 31, 2008	
	\$	%	\$	%
North America	44,721	87%	15,703	74%
Europe, Middle East and Africa	5,992	12%	5,167	24%
Rest of World	746	1%	427	2%
	51,459		21,297	

Comparative Revenue, Margin and Operating Expenses

CAD \$ thousands (except share and per share amounts)

	Three Months Ended		Six Months Ended	
	August 31, 2009	August 31, 2008	August 31, 2009	August 31, 2008
REVENUE	35,509	10,572	51,459	21,297
Cost of sales	20,584	6,945	31,024	13,289
Gross profit	14,925	3,627	20,435	8,008
EXPENSES				
Research and development	3,544	2,594	6,568	5,725
Selling and marketing	3,567	2,783	6,106	5,407
General and administrative	1,819	1,133	3,050	2,263
Investment tax credits	(60)	(50)	(120)	(100)
	8,870	6,460	15,604	13,295
Income (Loss) from Operations	6,054	(2,833)	4,830	(5,287)
Interest income (expense), net	(5)	170	22	415
Gain on sale of property and equipment	35	-	35	-
Foreign exchange gain (loss)	70	997	(1,616)	1,265
Net Income (Loss)	6,154	(1,666)	3,271	(3,607)
Income taxes	(209)	(11)	(209)	(11)
Future Income tax recovery	346	-	346	-
Net and Comprehensive Income (Loss)	6,291	(1,677)	3,408	(3,618)
Basic income (loss) per share	0.22	(0.06)	0.12	(0.13)
Diluted income (loss) per share	0.21	(0.06)	0.12	(0.13)
Basic weighted average shares outstanding	28,620,162	28,555,335	28,594,700	28,517,929
Diluted weighted average shares outstanding	29,675,696	28,555,335	29,281,050	28,517,929

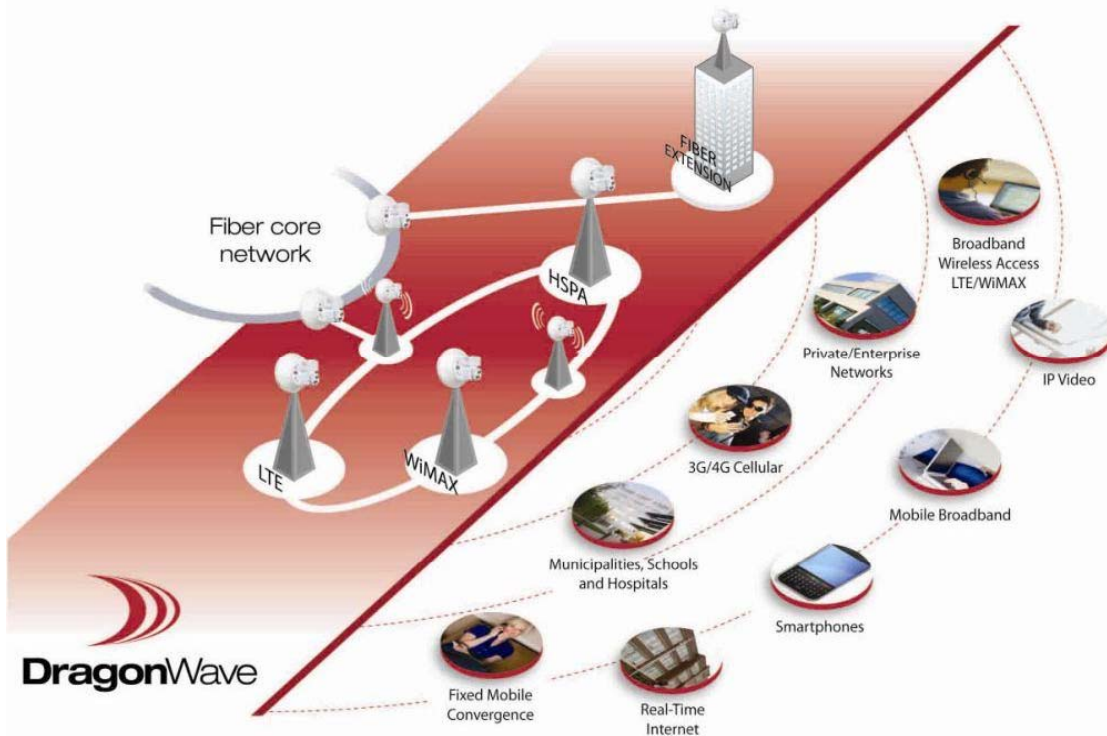
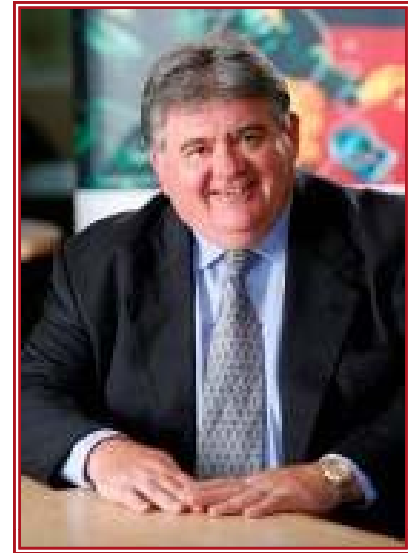
Balance Sheet Highlights

<i>CAD \$ Thousands</i>	Aug 31, 2009	May 31, 2009	Feb 28, 2009	Nov 30, 2008	Aug 31, 2008
Cash and Cash Equivalents and Short Term Investments	21,349	21,975	23,498	25,220	27,697
Other Current Assets	43,541	24,878	25,654	28,034	24,675
Current Liabilities	22,253	9,153	8,533	10,824	10,035
Days Sales Outstanding	58 days	59 days	76 days	87 days	88 days
Inventory Turnover	7.1 times	4.1 times	2.3 times	2.0 times	2.1 times

Note: Please refer to the “Liquidity and Capital Resources” section of the Management Discussion & Analysis for the periods ending August 31, 2009, May 31, 2009, February 28, 2009, November 30, 2008 and August 31, 2008 respectively

Business Highlights & Market Update

Peter Allen – President & CEO



The DragonWave logo, consisting of three white, curved, overlapping lines that suggest a wave or signal, is centered at the top of a dark red background. Below the logo, the company name 'DragonWave' is written in a white, sans-serif font. Underneath the company name, the slogan 'BACKHAUL EVOLVED' is displayed in a smaller, all-caps, white, sans-serif font.